

Introduction to Revit

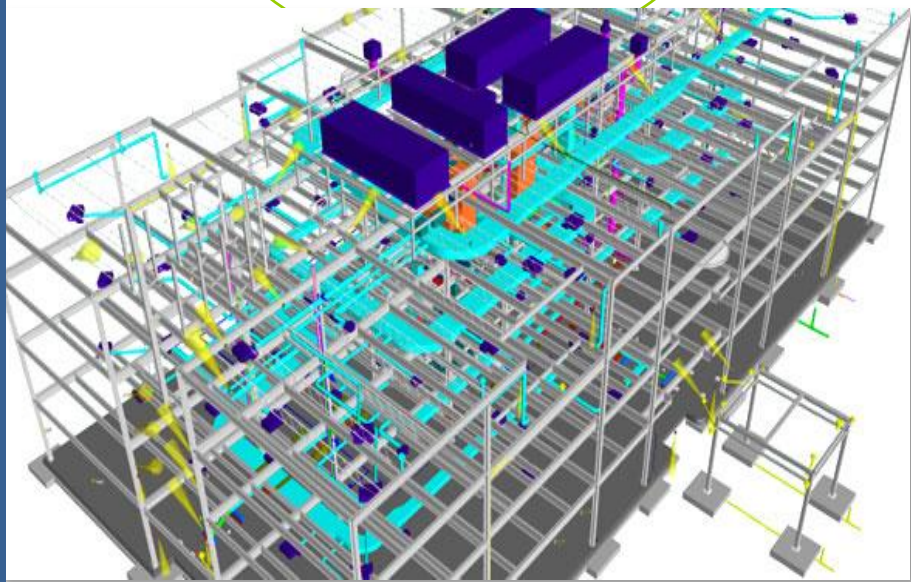


UAB CE Professional Education BIM/Revit Program

BIM has quickly become an indispensable tool in the engineering industry. UAB is offering a series of courses to provide professionals with essential BIM skills using the AutoCAD/Revit software. Courses are designed specifically for the engineering professional, focusing on providing the skills needed in industry.

Classes are held evenings, one day per week, and are taught by experienced professionals. Classes are hands-on, taught in the Civil Engineering Department's new Drafting Lab using the latest equipment and software.

The first course, "Introduction to BIM for Professionals", is designed for professionals with little or no BIM experience. It will provide an introduction to the Revit software and teach basic drafting skills. Students will complete drafting assignments and a final project. Future courses will teach advanced BIM concepts.



"Introduction to Revit for Professionals"

Class meets Monday evenings, 5:30 – 7:30 PM

UAB Hoehn Building

January 25 – April 11, 2016

Cost for course is \$2,250

To register or obtain more information,
email Andy Sullivan at asullivan@uab.edu

Taught through the UAB Civil Engineering Professional Education Program

Spring 2016 – January 25 – April 11

Building Information Modeling: Tools and Processes for Industry Practitioners

INSTRUCTOR: Blair Minyard – Adjunct Professor
UAB Email:
Direct Work Phone: 205-943-5440
Office Hours:

TEXTBOOK: NO TEXT

SOFTWARE:

- Autodesk Revit 2016 Software
- Autodesk Navisworks 2016 Software

COURSE INFORMATION:

This course has been designed to improve the depth, quantity and quality of educated and trained professionals currently working within the A/E industry. Students will be individually assessed and encouraged to develop their own understanding of how their professional career as well as their employer may utilize BIM (Revit/Navisworks) to a more detailed level.

LEARNING OUTCOMES:

- What is BIM?
- Identifying Project Requirements
- Developing Design Solutions
- Understand drawings Management & Level of Detail
- Implement BIM Protocols & Standards

TOPICS:

| Date | Class Material |
|--------|--|
| 25-Jan | Course Intro & Evaluation |
| 1-Feb | What is BIM? Introduction, Navigation, Ribbon |
| 8-Feb | Basic Modeling- Details |
| 15-Feb | Basic Modeling II- Components |
| 22-Feb | Basic Modeling III- Visualization/ Graphic Display |
| 29-Feb | Basic Modeling IV- Modify, Tools, Importing/Linking |
| 7-Mar | Family Editor- Create A Component, Ref. Planes, Voids/Joins/Cut Geometry |
| 14-Mar | Annotation- Grids, Dimensions, Text, Tags, Rooms, Schedules, Sheets, Symbols |
| 21-Mar | Spring Break |
| 28-Mar | Work Sharing- Worksets, Central Model |
| 4-Apr | View Template- Filters |
| 11-Apr | Coordination- Navisworks, Collaboration |

**Schedule subject to change based on Class Evaluation*